

THE LOG

MASSACHUSETTS STATE POLICE MUSEUM and LEARNING CENTER

FEBRUARY, 2012

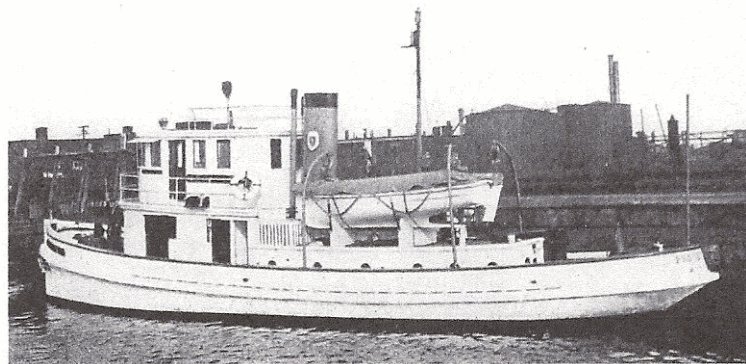
NOTICE: Graduation for 80th RTT – March 9, 2012 @ DCU Center, Worcester – Doors open 9:00 AM

JULY 1, 1924

In October I stopped at the Essex Shipbuilding Museum on Route 133 in Essex. I have been there many times and always found it closed. On this day it was open. In my conversation with Justin Demetri, the visitor services director, I asked where the Story Boat Yard was located as I was interested in a boat built there. Justin advised me that their museum was the Story boatyard. He then asked if I knew the name of the boat. "The 'Protector'" I responded. Justin turned and looked me in the eye and said, "That is the State Police boat." There were over 4,000 schooners and 1,000 smaller vessels built in Essex. Justin's ability to identify one boat – OUR BOAT – out of thousands was incredible. He then advised me to wait where I was. He returned with a flier posting the museums Fall/Winter hours (Saturday – Sunday 10AM – 5PM) and handed it to me. Displayed on the front was a photo of the PROTECTOR under construction in 1924! I was amazed!

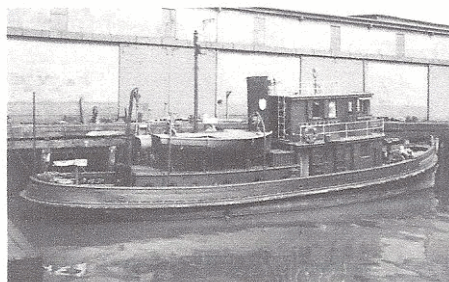


The PROTECTOR was the third State Police boat, it's only skipper was Lieutenant Clifton W. Kendall. He captained the vessel from her launching in 1924 until she retired in 1933 with a crew of five professional civilian seamen. Additional State Police Patrolmen were assigned for special details. The PROTECTOR patrolled Massachusetts waters from Fall River to Salisbury to enforce the fishing and game laws, the law against pollution, and prohibition laws. She was also equipped for ice braking duty on the Charles River.



PROTECTOR SPECIFICATIONS

73 ' overall – 68.4' at waterline – 17' beam –
8' draught – 6 cylinder Bessemer 230 HP diesel -
deck mounts for two one ponder rapid fire guns-
1,250 gallons fuel capacity with a cursing range
of 1,500 miles at 13 knots.



PROTECTOR



Lt. Kendall

On display at the Essex Shipbuilding Museum are many of the tools used to construct the PROTECTOR. Many buildings and methods used in past boat building are still used to this day. Our history in Massachusetts is everywhere, thanks to Justin and the Essex Shipbuilding Museum we have uncovered another link to our past.

THE TRADITION CONTINUES

The State Police Museum and Learning Center is located at the OLD GRAFTON BARRACKS (Rte 140). This is your museum, everyone is invited to visit. Volunteers are available several days a week. Please call Ed Montague 978-686-8702 or Tom McNulty 978-535-1259 to schedule your guided tour.

Visit us at:
www.msplmc.com

Edited by: Tom McNulty

Copyright 2012

